

**380TH AIR WING GROUP [VIPER 1,2]**

MISSION: #1759

**BASIC INFO**

START TIME 6-JUL-2011 1600LT (1200UTC)

TAKEOFF TIME 1610L LAND TIME 1907L

HOME FREQ AL DHAFRA 251.1AM TCN 96X AL MINHAD 250.1AM

WX CLR SR 0528LT SS 1913LT TEMP 20 C CLD 5K WIND 125 7KTS POOR VSBY

**FLIGHT**

FLT	CS	T#	TCN	DLNK	LSR	WPN
Viper 1	1-1	91	11X	VR11	1651	9X,AC,Rkts,3*C97,T,CT,H,3*C97,Rkts,AC,9X
	1-2	92	12X	VR12	1652	9X,AC,Rkts,3*C97,T,CT,H,3*C97,Rkts,AC,9X
	1-3	93	13X	VR13	1653	9X,AC,Rkts,3*C97,T,CT,H,3*C97,Rkts,AC,9X
	1-4	94	14X	VR14	1654	9X,AC,Rkts,3*C97,T,CT,H,3*C97,Rkts,AC,9X
Viper 2	2-1	95	15X	VR31	1655	9X,AC,Rkts,3*C97,T,CT,H,3*C97,Rkts,AC,9X
	2-2	96	16X	VR32	1656	9X,AC,Rkts,3*C97,T,CT,H,3*C97,Rkts,AC,9X
	2-3	97	17X	VR41	1657	9X,AC,Rkts,3*C97,T,CT,H,3*C97,Rkts,AC,9X
	2-4	98	18X	VR42	1658	9X,AC,Rkts,3*C97,T,CT,H,3*C97,Rkts,AC,9X

**COMMS LADDER**

UHF	AGCY	FREQ	VHF	AGCY	FREQ
1	Al Dhafra	251.10	1	Al Dhafra	126.50
2	Al Minhac	250.10	2	Al Minhac	118.55
3	Liwa	250.95	3	Liwa	119.30
4	Khasab	250.00	4	Khasab	124.35
5	Darkstar	256.00	5	Viper 1	131.10
6	Magic	264.00	6	Viper 2	131.20
7	Wizard	265.00	7	Viper 3	131.30
8	Texaco 3	257.30	8	Viper 4	131.40
9	Texaco 4	257.40	9	Dodge 1	132.10
10	Texaco 5	257.50	10	Dodge 2	132.20
11	Texaco 6	257.60	11	Dodge 3	132.30
12	Texaco 7	257.70	12	Dodge 4	132.40
13	Axeman	244.10	13	Hawg 1	141.10
14	Darknight	244.20	14	Hawg 2	141.20
15	Warrior	244.30	15	Hawg 3	141.30
16	Pointer	244.40	16	Hawg 4	141.40
17	Eyeball	244.50	17	Ford 1	142.10
18	Moonbeam	244.60	18	Ford 2	142.20
19	Whiplash	244.70	19	Ford 3	142.30
20	Finger	244.80	20	Ford 4	142.40

**ALT AFLD**

AFLD	FREQ	COORD
Sharjah Int	250.1AM	N25°20'20" E55°30'14"
Bandar L	250.0AM	N26°31'58" E54°49'40"

**FLIGHT WAYPOINT**

WP	ID	TIME	SPEED	ALT	ACT
0	ADB	1610L	0		Takeoff
1	DEP	1613L	0.60M	5K	Outbound
2	RV	1618L	0.60M	25K	Regroup
3	PRE	1630L	0.85M	26K	Ingress
4	AAR	1635L	0.85M	26K	Refuel
5	LLF	1710L	0.45M	AGL	Descend
6	LAR	1715L	0.45M	AGL	Attack
7	EGR	1840L	0.75M	26K	Egress
8	RET	1852L	0.70M	15K	Inbound
9	ARR	1902L	0.40M	3K	Arrival
10	RWY	1907L	0		Landing

**SUPPORT**

FLT	A/C	TASK	A/A	FREQ
Darkstar	E-3A	AWACS		UHF CH5
Wizard	E-3A	AWACS		UHF CH7
Texaco 3	KC-135	Refuel	57X	UHF CH8
Texaco 4	KC-135	Refuel	58X	UHF CH9
Texaco 5	KC-135	Refuel	59X	UHF CH10
Texaco 6	KC-135	Refuel	60X	UHF CH11
Texaco 7	KC-135	Refuel	61X	UHF CH12

**380TH AIR WING GROUP [DODGE 1,2]**

MISSION: #1759

**BASIC INFO**

START TIME 6-JUL-2011 1600LT (1200UTC)

TAKEOFF TIME 1614L LAND TIME 1907L

HOME FREQ AL DHAFRA 251.1AM TCN 96X AL MINHAD 250.1AM

WX CLR SR 0528LT SS 1913LT TEMP 20 C CLD 5K WIND 125 7KTS POOR VSBY

**FLIGHT**

FLT	CS	T#	TCN	DLNK	LSR	WPN
Dodge 1	1-1	81	21X	DE11	1661	9P,,AC,,N,CT,T,,AC,,9P
	1-2	82	22X	DE12	1662	9P,,AC,,N,CT,T,,AC,,9P
Dodge 2	2-1	83	23X	DE21	1663	9P,,AC,,N,CT,T,,AC,,9P
	2-2	84	24X	DE22	1664	9P,,AC,,N,CT,T,,AC,,9P

**COMMS LADDER**

UHF	AGCY	FREQ	VHF	AGCY	FREQ
1	Al Dhafra	251.10	1	Al Dhafra	126.50
2	Al Minhac	250.10	2	Al Minhac	118.55
3	Liwa	250.95	3	Liwa	119.30
4	Khasab	250.00	4	Khasab	124.35
5	Darkstar	256.00	5	Viper 1	131.10
6	Magic	264.00	6	Viper 2	131.20
7	Wizard	265.00	7	Viper 3	131.30
8	Texaco 3	257.30	8	Viper 4	131.40
9	Texaco 4	257.40	9	Dodge 1	132.10
10	Texaco 5	257.50	10	Dodge 2	132.20
11	Texaco 6	257.60	11	Dodge 3	132.30
12	Texaco 7	257.70	12	Dodge 4	132.40
13	Axeman	244.10	13	Hawg 1	141.10
14	Darknight	244.20	14	Hawg 2	141.20
15	Warrior	244.30	15	Hawg 3	141.30
16	Pointer	244.40	16	Hawg 4	141.40
17	Eyeball	244.50	17	Ford 1	142.10
18	Moonbeam	244.60	18	Ford 2	142.20
19	Whiplash	244.70	19	Ford 3	142.30
20	Finger	244.80	20	Ford 4	142.40

**SUPPORT**

FLT	A/C	TASK	A/A	FREQ
Darkstar	E-3A	AWACS		UHF CH5
Wizard	E-3A	AWACS		UHF CH7
Texaco 3	KC-135	Refuel	57X	UHF CH8
Texaco 4	KC-135	Refuel	58X	UHF CH9
Texaco 5	KC-135	Refuel	59X	UHF CH10
Texaco 6	KC-135	Refuel	60X	UHF CH11
Texaco 7	KC-135	Refuel	61X	UHF CH12

**FLIGHT WAYPOINT**

WP	ID	TIME	SPEED	ALT	ACT
0	ADB	1614L	0		Takeoff
1	DEP	1617L	0.60M	5K	Outbound
2	RV	1622L	0.60M	25K	Regroup
3	PRE	1634L	0.85M	26K	Ingress
4	AAR	1639L	0.85M	26K	Refuel
5	LLF	1710L	0.45M	AGL	Descend
6	LAR	1715L	0.45M	AGL	Attack
7	EGR	1840L	0.75M	26K	Egress
8	RET	1852L	0.70M	15K	Inbound
9	ARR	1902L	0.40M	3K	Arrival
10	RWY	1907L	0		Landing

**TARGET WAYPOINT**

#	ID	COORD	ALT (FT)

**ALT AFLD**

AFLD	FREQ	COOR
Sharjah	250.1AM	N25°20'20" E55°30'14"
B.Lengeh	250.0AM	N26°31'58" E54°49'40"

## MISSION: #1762



START TIME 6-JUL-2011 1600LT (1200UTC)  
TAKEOFF TIME 1610L LAND TIME 1903L  
HOME FREQ AL DHAFRA 251.1AM TCN 96X AL MINHAD 250.1AM  
WX CLR SR 0528LT SS 1913LT TEMP 20 C CLD 5K WIND 125 7KTS POOR VSBY

FLT	CS	T#	TCN	DLNK	LSR	WPN
Ford 1	1-1	201		FD11		AC,WT,AC,AB,AB,CT,AB,AB,AC,WT,AC
	1-2	202		FD12		AC,WT,AC,AB,AB,CT,AB,AB,AC,WT,AC
Ford 2	2-1	203		FD21		AC,WT,AC,AB,AB,CT,AB,AB,AC,WT,AC
	2-2	204		FD22		AC,WT,AC,AB,AB,CT,AB,AB,AC,WT,AC

UHF	AGCY	FREQ	VHF	AGCY	FREQ
1	Al Dhafra	251.10	1	Al Dhafra	126.50
2	Al Minhac	250.10	2	Al Minhac	118.55
3	Liwa	250.95	3	Liwa	119.30
4	Khasab	250.00	4	Khasab	124.35
5	Darkstar	256.00	5	Viper 1	131.10
6	Magic	264.00	6	Viper 2	131.20
7	Wizard	265.00	7	Viper 3	131.30
8	Texaco 3	257.30	8	Viper 4	131.40
9	Texaco 4	257.40	9	Dodge 1	132.10
10	Texaco 5	257.50	10	Dodge 2	132.20
11	Texaco 6	257.60	11	Dodge 3	132.30
12	Texaco 7	257.70	12	Dodge 4	132.40
13	Axeman	244.10	13	Hawg 1	141.10
14	Darknight	244.20	14	Hawg 2	141.20
15	Warrior	244.30	15	Hawg 3	141.30
16	Pointer	244.40	16	Hawg 4	141.40
17	Eyeball	244.50	17	Ford 1	142.10
18	Moonbeam	244.60	18	Ford 2	142.20
19	Whiplash	244.70	19	Ford 3	142.30
20	Finger	244.80	20	Ford 4	142.40

FLT	A/C	TASK	A/A	FREQ
Darkstar	E-3A	AWACS		UHF CH5
Wizard	E-3A	AWACS		UHF CH7
Texaco 3	KC-135	Refuel	57X	UHF CH8
Texaco 4	KC-135	Refuel	58X	UHF CH9
Texaco 5	KC-135	Refuel	59X	UHF CH10
Texaco 6	KC-135	Refuel	60X	UHF CH11
Texaco 7	KC-135	Refuel	61X	UHF CH12

WP	ID	TIME	SPEED	ALT	ACT
0	AMB	1610L	0		Takeoff
1	DEP	1612L	0.60M	5K	Outbound
2	RV	1616L	0.60M	25K	Regroup
3	PRE	1625L	0.85M	30K	Ingress
4	AAR	1631L	0.85M	30K	Refuel
5	CAP	1700L	0.85M	35K	CAP
6	CAP	1830L	0.85M	35K	CAP
7	EGR	1840L	0.75M	25K	Egress
8	RET	1855L	0.70M	15K	Inbound
9	ARR	1900L	0.40M	3K	Arrival
10	RWY	1903L	0		Landing

[illegible]

AFLD	FREQ	COOR
Sharjah	250.1AM	N25°20'20" E55°30'14"
B. Lengeh	250.0AM	N26°31'58" E54°49'40"

**380TH AIR WING GROUP [HAWG 1,2]**

MISSION: #1759

**BASIC INFO**

START TIME 6-JUL-2011 1600LT (1200UTC)

TAKEOFF TIME 1612L LAND TIME 1913L

HOME FREQ AL DHAFRA 251.1AM TCN 96X AL MINHAD 250.1AM

WX CLR SR 0528LT SS 1913LT TEMP 20 C CLD 5K WIND 125 7KTS POOR VSBY

**FLIGHT**

FLT	CS	T#	TCN	DLNK	LSR	WPN
Hawg 1	1-1	171	31X	HG11	1671	2*9M,T,3*Rkts,C97,C97,,C97,C97,3*Rkts,C97,ECM
	1-2	172	32X	HG12	1672	2*9M,T,3*Rkts,C97,C97,,C97,C97,3*Rkts,C97,ECM
Hawg 2	2-1	173	33X	HG21	1673	2*9M,T,3*Rkts,C97,C97,,C97,C97,3*Rkts,C97,ECM
	2-2	174	34X	HG22	1674	2*9M,T,3*Rkts,C97,C97,,C97,C97,3*Rkts,C97,ECM

**COMMS LADDER**

UHF	AGCY	FREQ	VHF	AGCY	FREQ
1	Al Dhafra	251.10	1	Al Dhafra	126.50
2	Al Minhac	250.10	2	Al Minhac	118.55
3	Liwa	250.95	3	Liwa	119.30
4	Khasab	250.00	4	Khasab	124.35
5	Darkstar	256.00	5	Viper 1	131.10
6	Magic	264.00	6	Viper 2	131.20
7	Wizard	265.00	7	Viper 3	131.30
8	Texaco 3	257.30	8	Viper 4	131.40
9	Texaco 4	257.40	9	Dodge 1	132.10
10	Texaco 5	257.50	10	Dodge 2	132.20
11	Texaco 6	257.60	11	Dodge 3	132.30
12	Texaco 7	257.70	12	Dodge 4	132.40
13	Axeman	244.10	13	Hawg 1	141.10
14	Darknight	244.20	14	Hawg 2	141.20
15	Warrior	244.30	15	Hawg 3	141.30
16	Pointer	244.40	16	Hawg 4	141.40
17	Eyeball	244.50	17	Ford 1	142.10
18	Moonbea	244.60	18	Ford 2	142.20
19	Whiplash	244.70	19	Ford 3	142.30
20	Finger	244.80	20	Ford 4	142.40

**SUPPORT**

FLT	A/C	TASK	A/A	FREQ
Darkstar	E-3A	AWACS		UHF CH5
Wizard	E-3A	AWACS		UHF CH7
Texaco 3	KC-135	Refuel	57X	UHF CH8
Texaco 4	KC-135	Refuel	58X	UHF CH9
Texaco 5	KC-135	Refuel	59X	UHF CH10
Texaco 6	KC-135	Refuel	60X	UHF CH11
Texaco 7	KC-135	Refuel	61X	UHF CH12

**FLIGHT WAYPOINT**

WP	ID	TIME	SPEED	ALT	ACT
0	AMB	1612L	0		Takeoff
1	DEP	1615L	0.40M	5K	Outbound
2	RV	1620L	0.40M	15K	Regroup
3	PRE	1628L	0.50M	15K	Ingress
4	AAR	1640L	0.50M	15K	Refuel
5	LLF	1710L	0.45M	AGL	Descend
6	LAR	1715L	0.45M	AGL	Attack
7	EGR	1845L	0.50M	26K	Egress
8	RET	1900L	0.50M	15K	Inbound
9	ARR	1910L	0.30M	3K	Arrival
10	RWY	1913L	0		Landing

**TARGET WAYPOINT**

WP	ID	COORD	ALT	RMKS

**ALT AFLD**

AFLD	FREQ	COOR
Sharjah	250.1AM	N25°20'20" E55°30'14"
B.Lengeh	250.0AM	N26°31'58" E54°49'40"

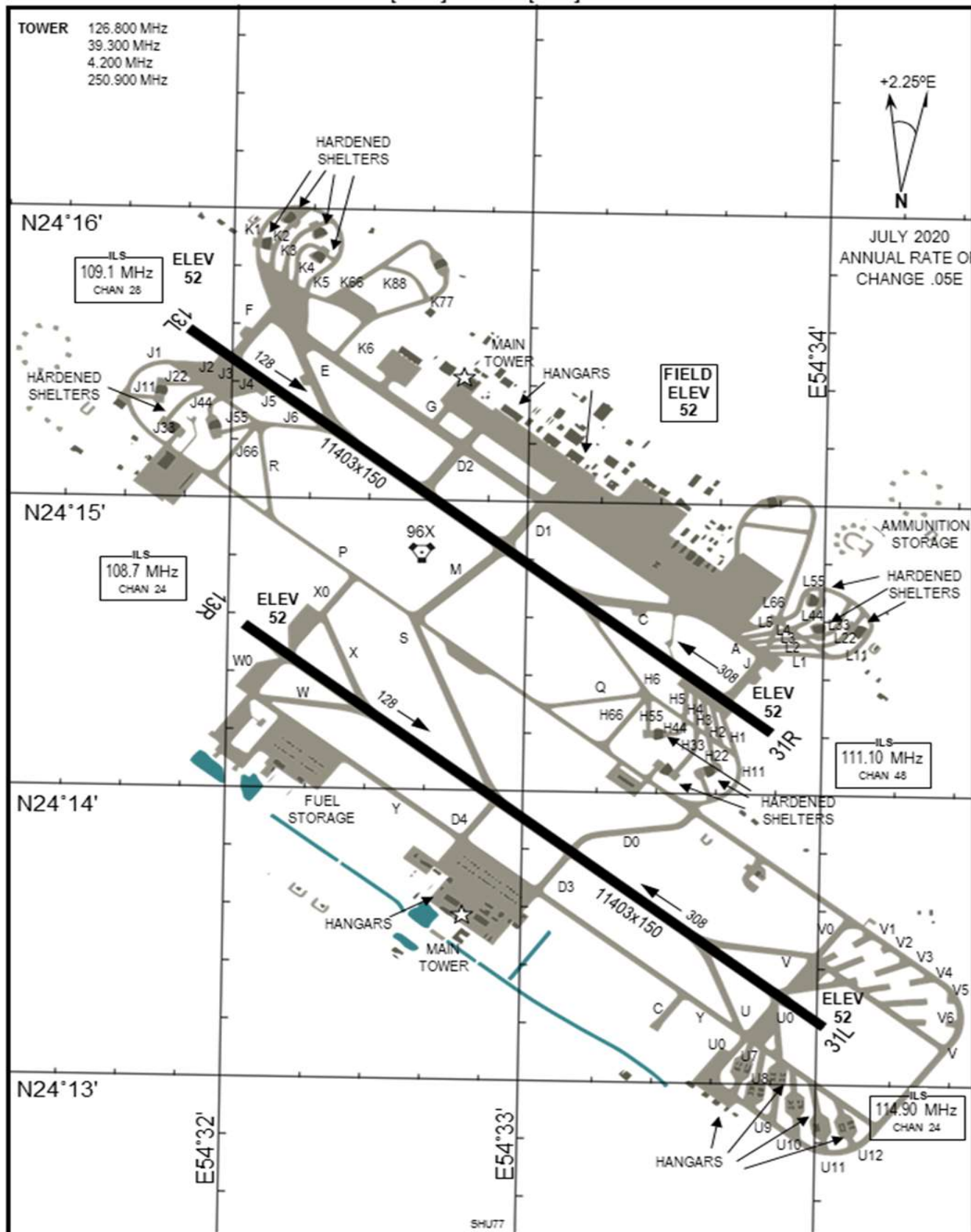




# AIRPORT DIAGRAM

[USAF] AFD-3351 [ICAO]

**AL DHAFRA AIRBASE (OMAM)**  
ABU DHABI, UNITED ARAB EMIRATES



# AIRPORT DIAGRAM

NOT FOR REAL NAVIGATION

ABU DHABI, UNITED ARAB EMIRATES  
AL DHAFRA AIRBASE (OMAM)

Source: CombatWombat's Airfield Diagrams: Persian Gulf

# 380TH AIR WING GROUP

MISSION: CM-1759 / 1762

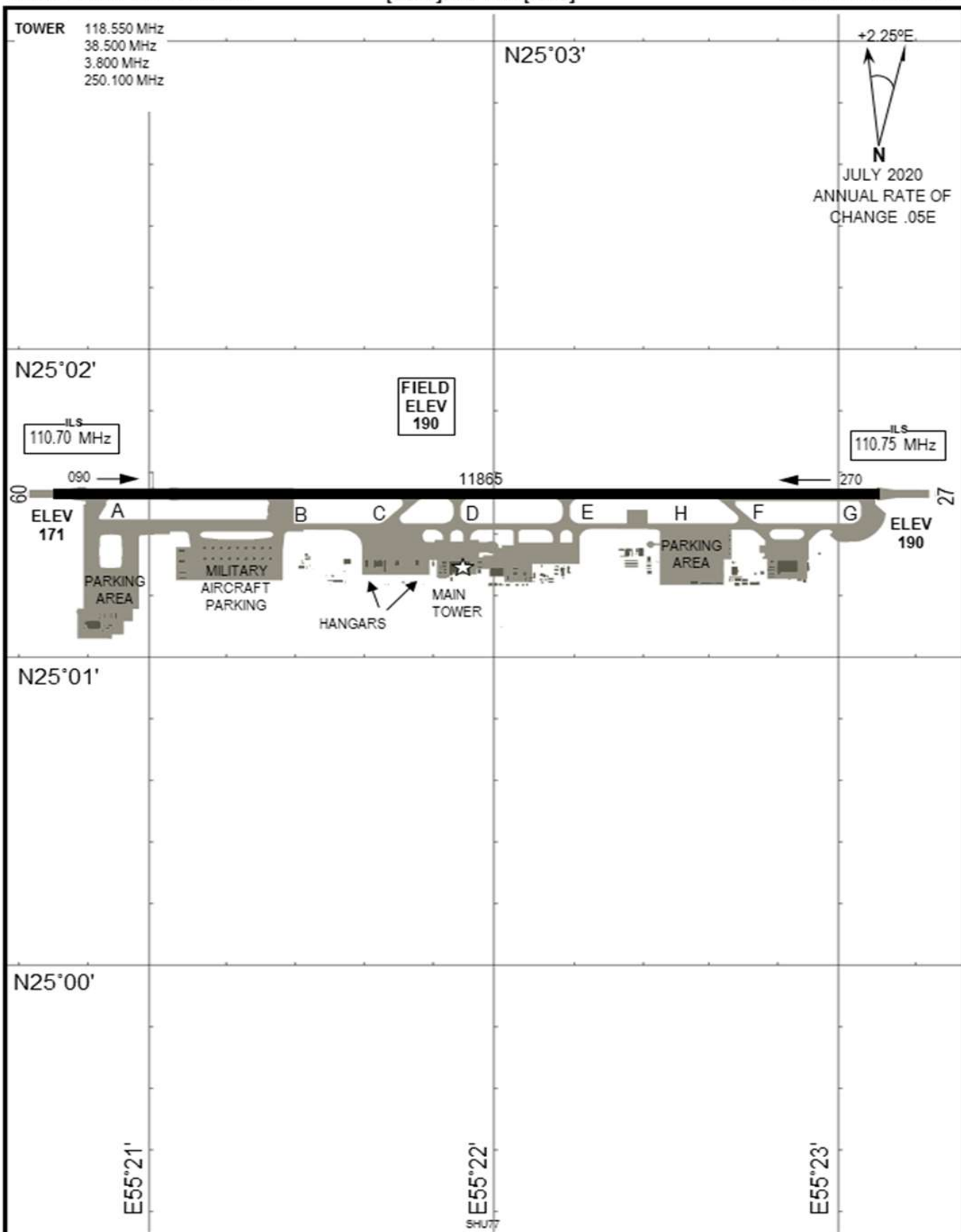


## AIRPORT DIAGRAM

[USAF] AFD-3351 [ICAO]

AL MINHAD AIRBASE (OMDM)

AL MINHAD, DUBAI, UAE



## AIRPORT DIAGRAM

NOT FOR REAL NAVIGATION

AL MINHAD, DUBAI, UAE  
AL MINHAD AIRBASE (OMDM)

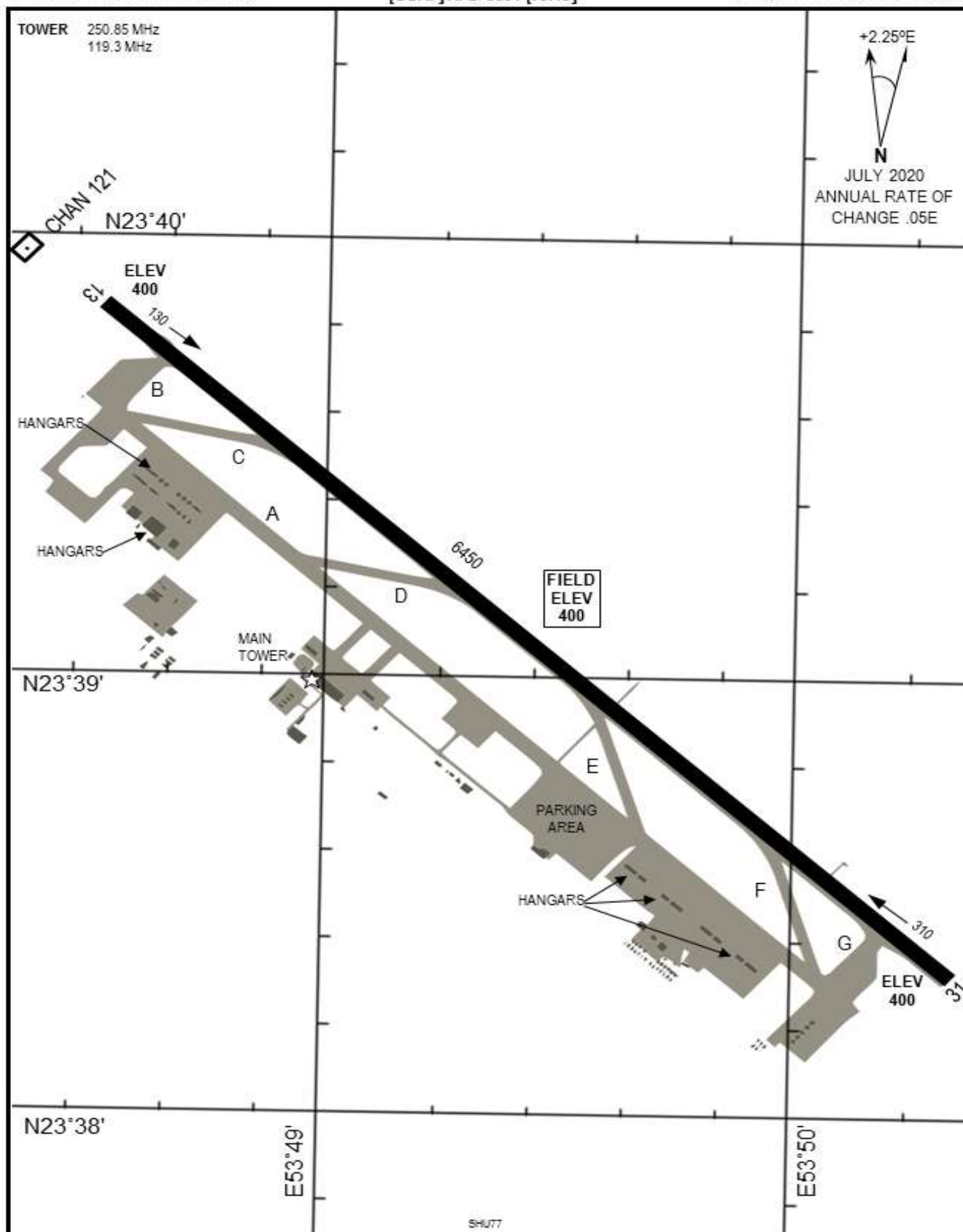
Source: CombatWombat's Airfield Diagrams: Persian Gulf



# AIRPORT DIAGRAM

[USAF] AFD-3351 [ICAO]

**LIWA AIRBASE (OMLW)**  
LIWA, UNITED ARAB EMIRATES



# AIRPORT DIAGRAM

NOT FOR REAL NAVIGATION

AL MAKTOUM, JEBEL ALI, UAE  
AL MAKTOUM INTERNATIONAL(OMDW)

Source: CombatWombat's Airfield Diagrams: Persian Gulf

# 380TH AIR WING GROUP

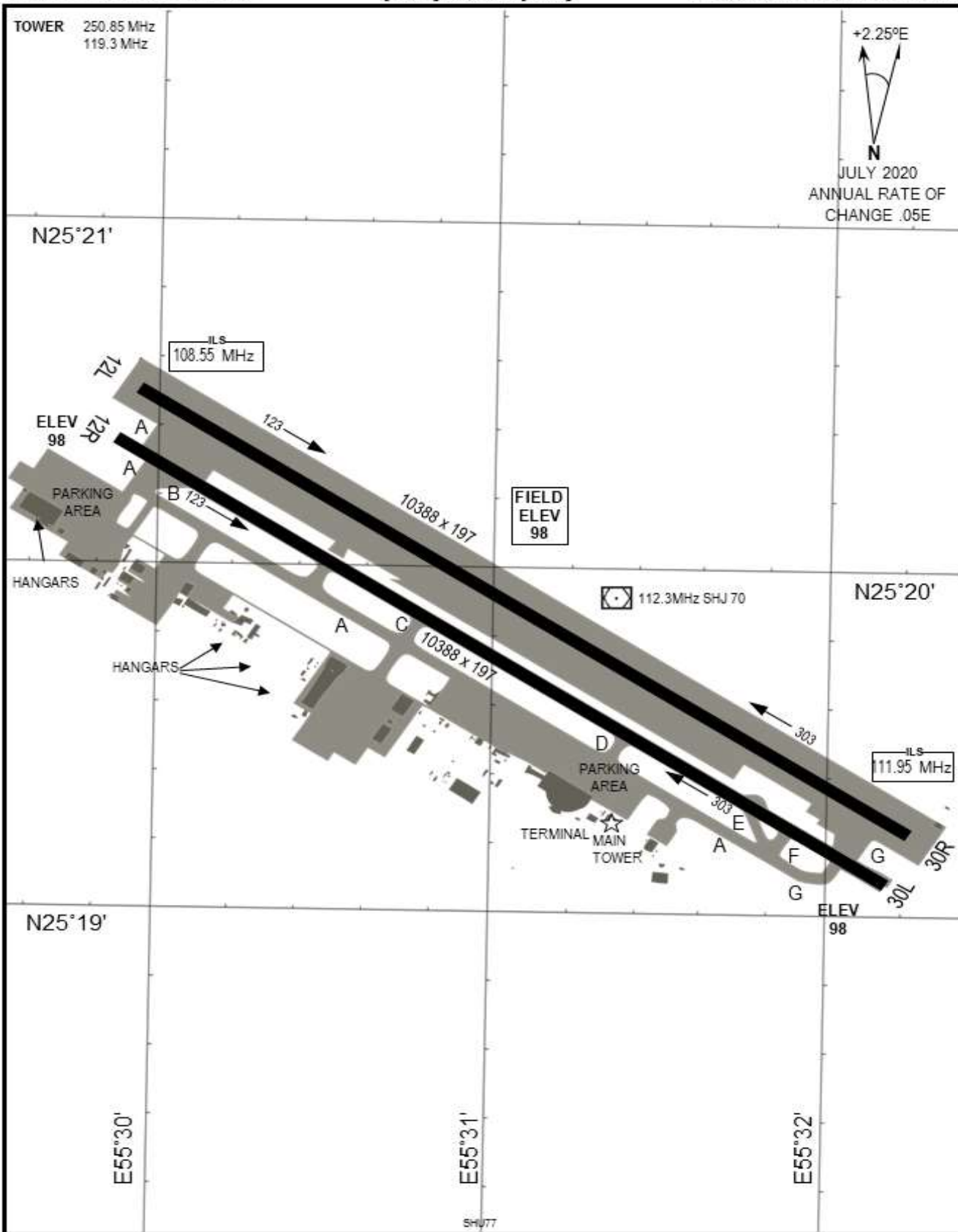
MISSION: CM-1759 / 1762



## AIRPORT DIAGRAM

[USAF] AFD-3351 [ICAO]

SHARJAH INTL. (OMSJ)  
SHARJAH, UNITED ARAB EMIRATES



## AIRPORT DIAGRAM

NOT FOR REAL NAVIGATION

SHARJAH, UNITED ARAB EMIRATES  
SHARJAH INTL. (OMSJ)

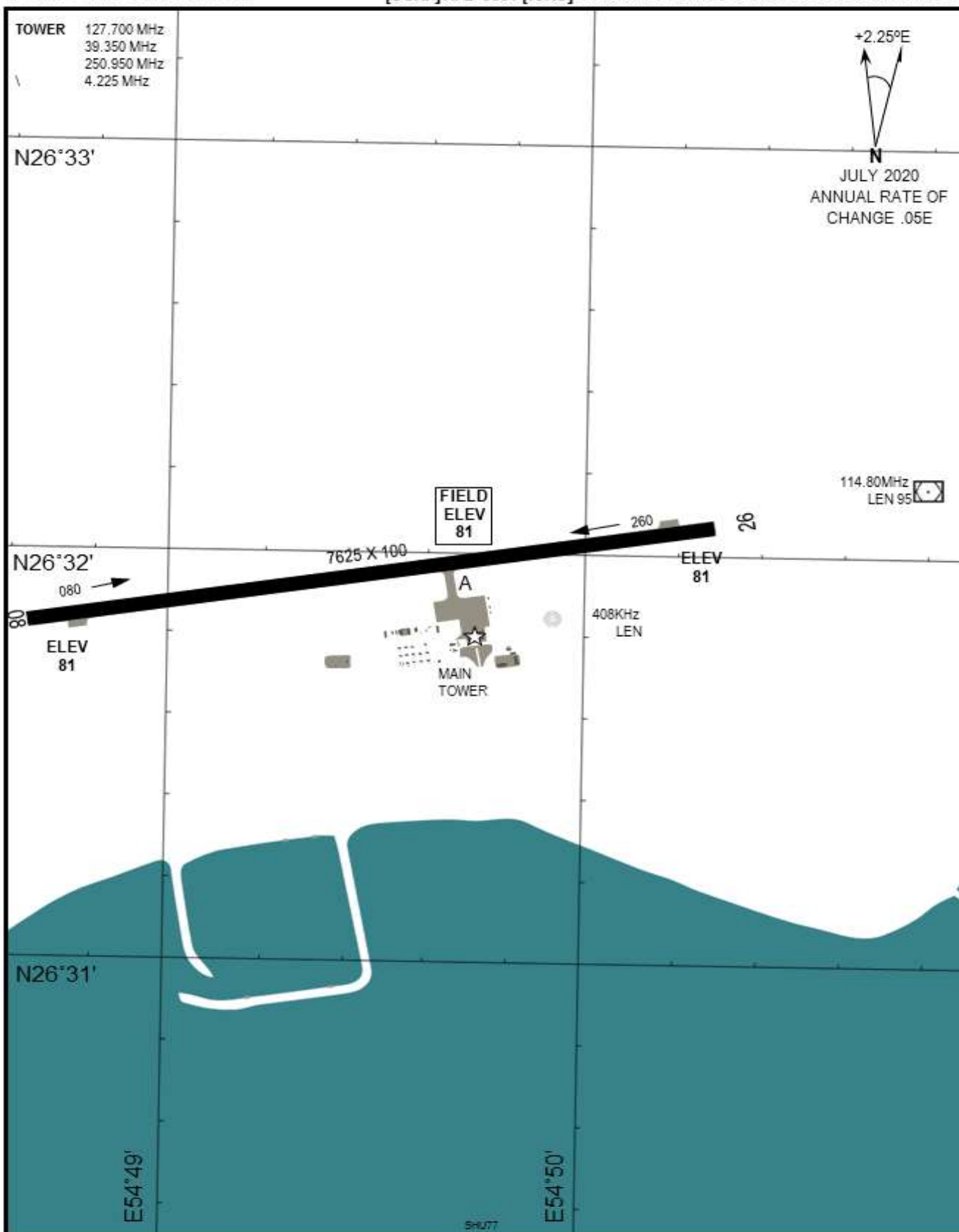
Source: CombatWombat's Airfield Diagrams: Persian Gulf





# AIRPORT DIAGRAM

[USAF] AFD-3351 [ICAO] BANDAR LENGEH, HORMOZGAN PROVINCE IRAN



# AIRPORT DIAGRAM

NOT FOR REAL NAVIGATION

BANDAR LENGEH, HORMOZGAN PROVINCE IRAN

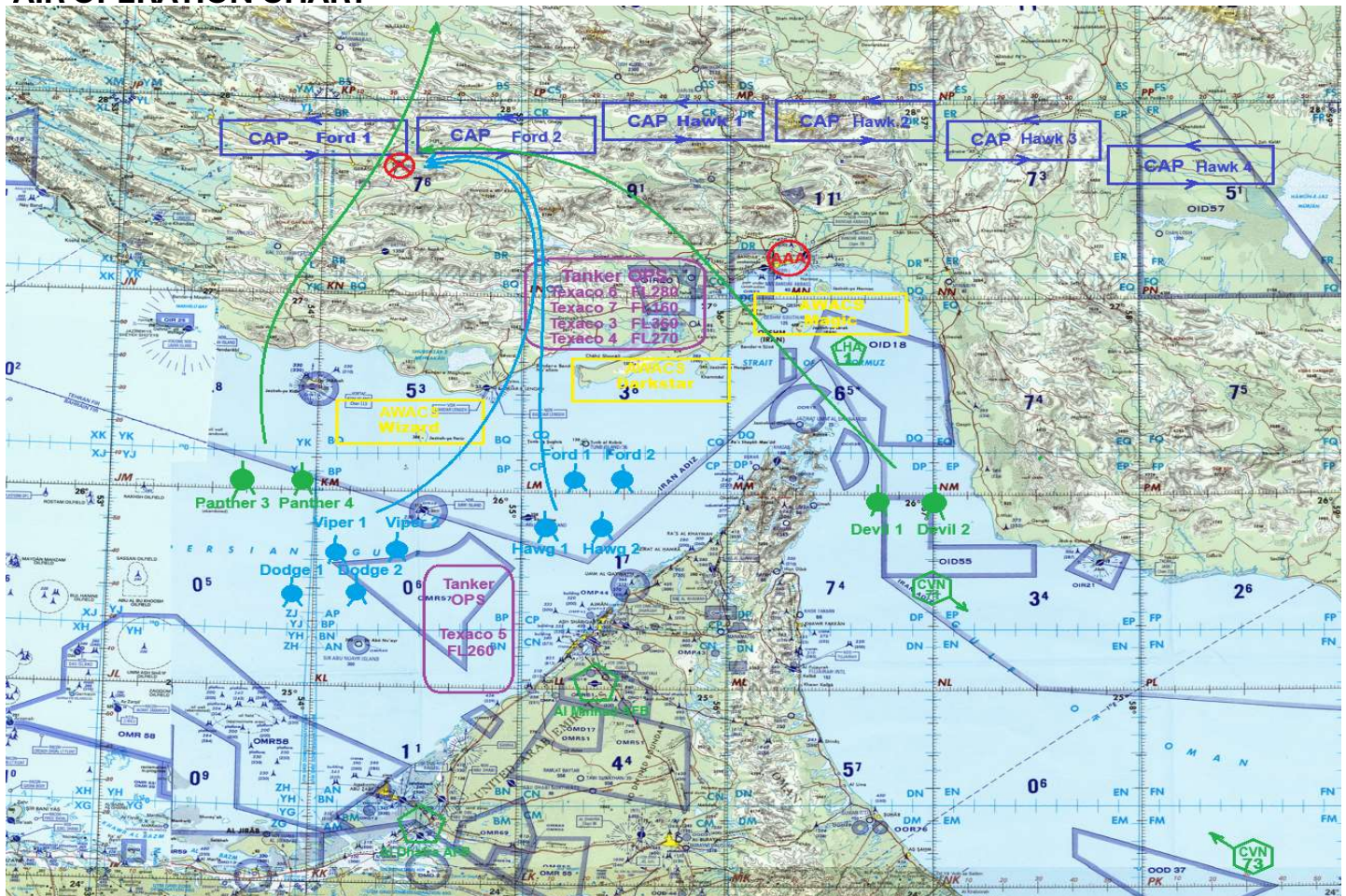
BANDAR LENGEH(OIBL)

Source: CombatWombat's Airfield Diagrams: Persian Gulf

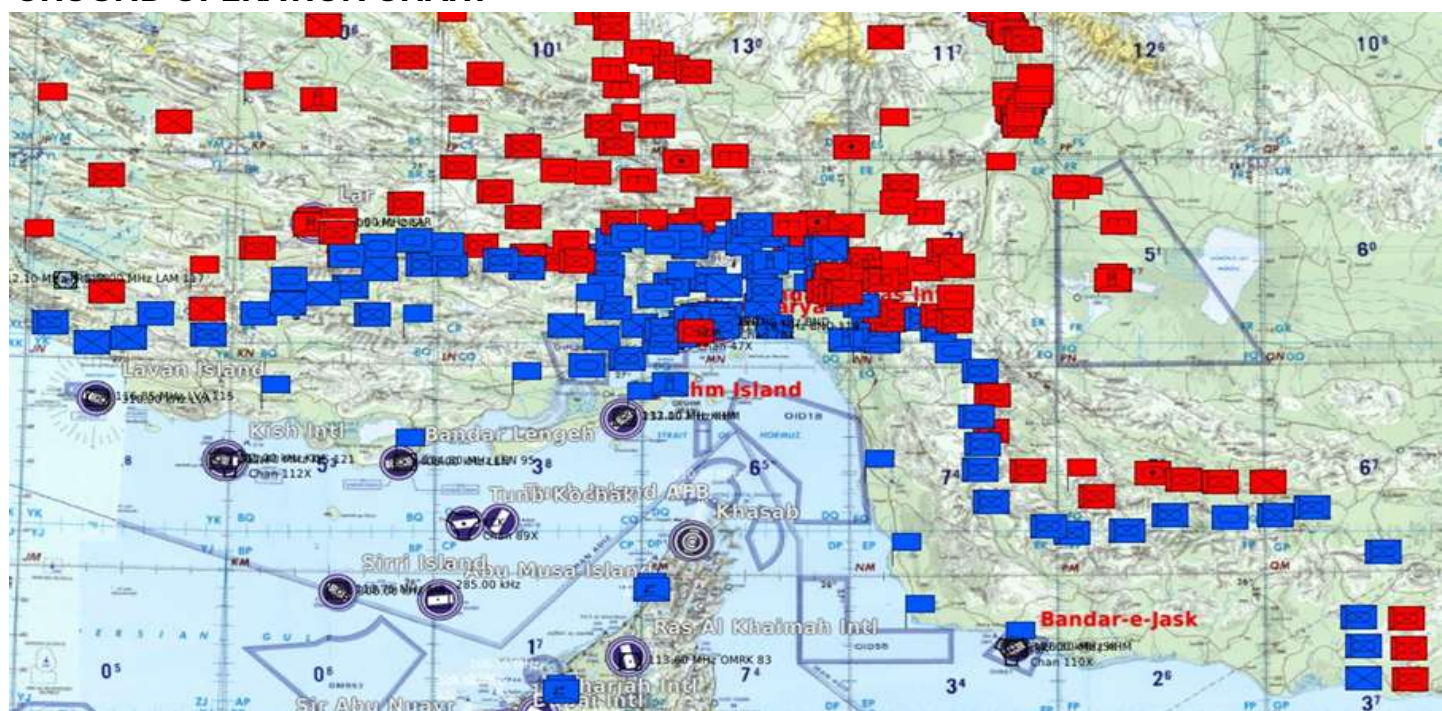




## AIR OPERATION CHART



## GROUND OPERATION CHART







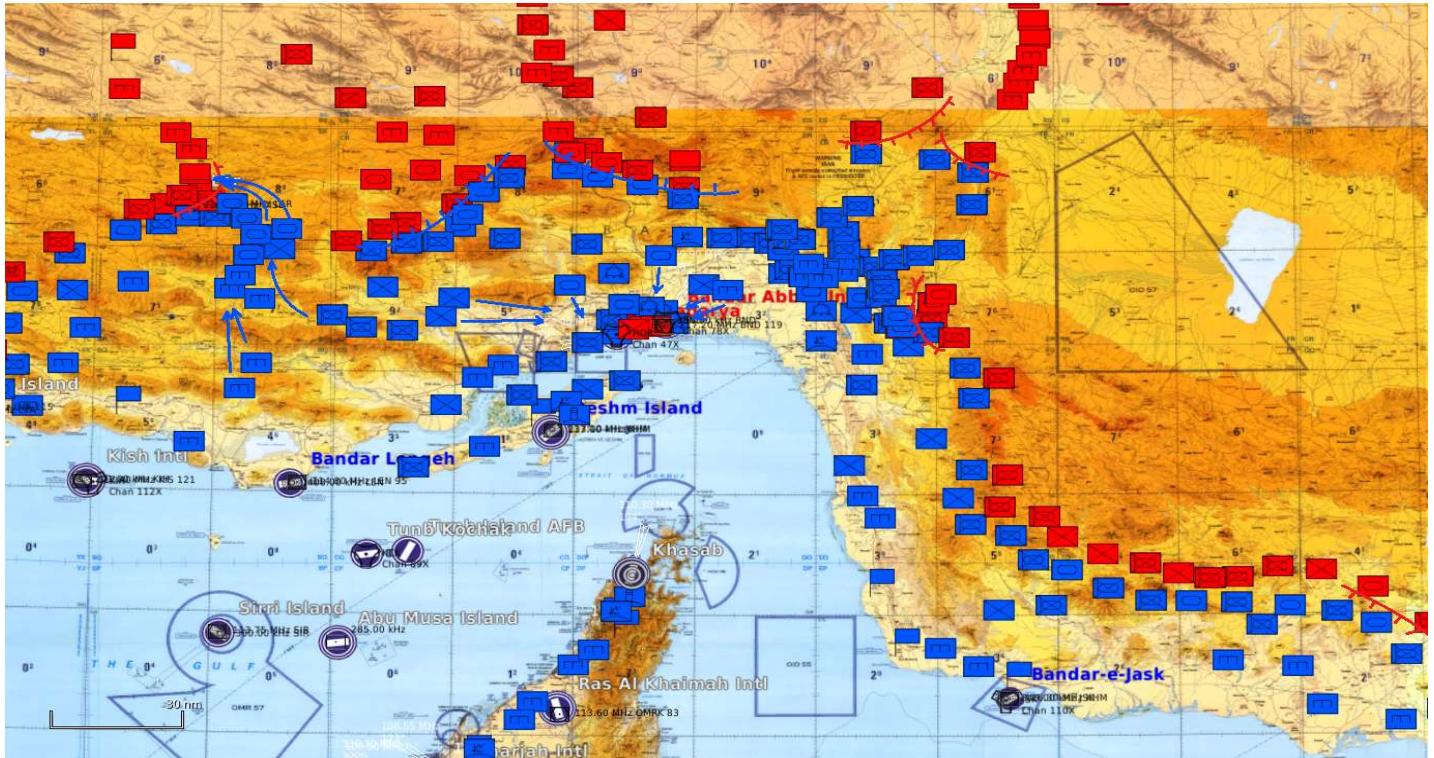
## FLIGHT PLAN



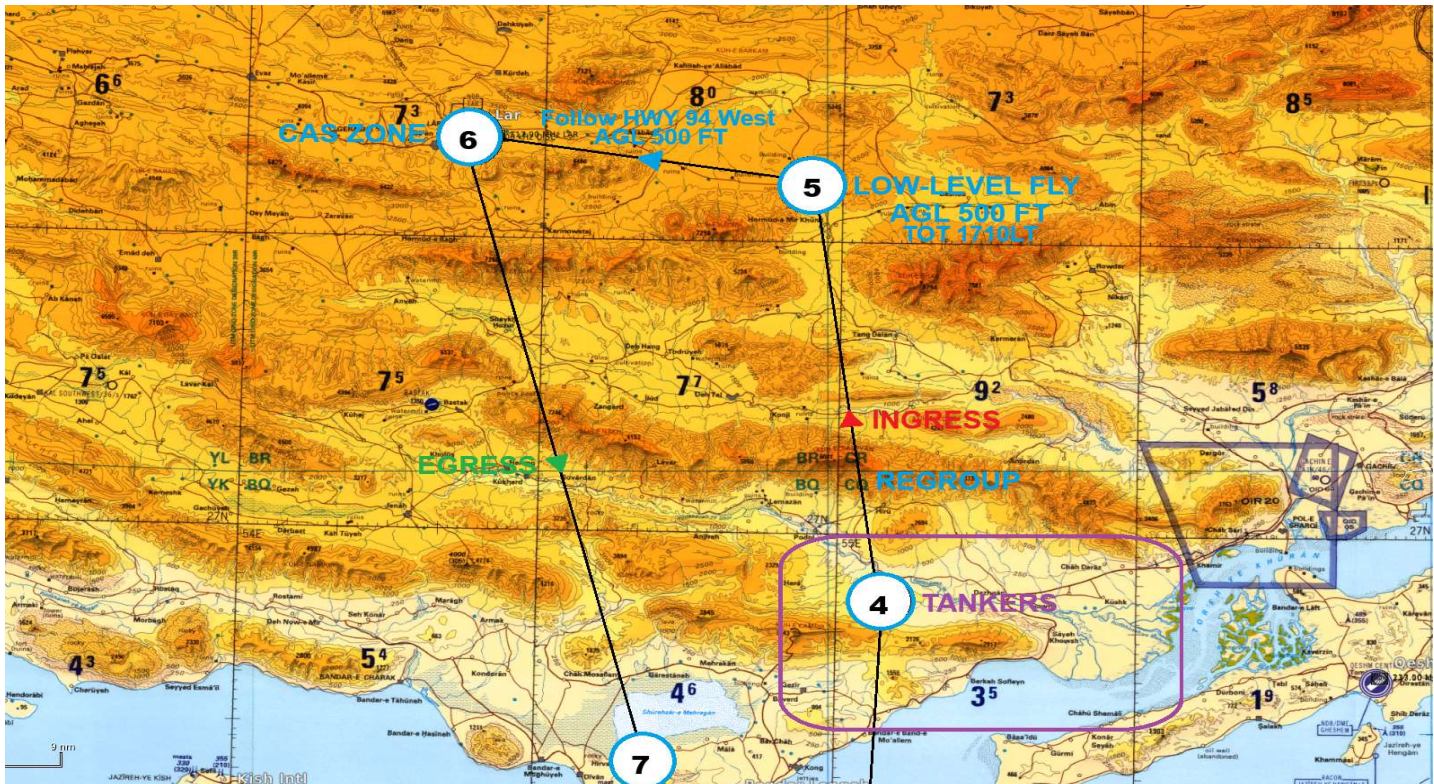




## GROUND MOVEMENT UPDATE



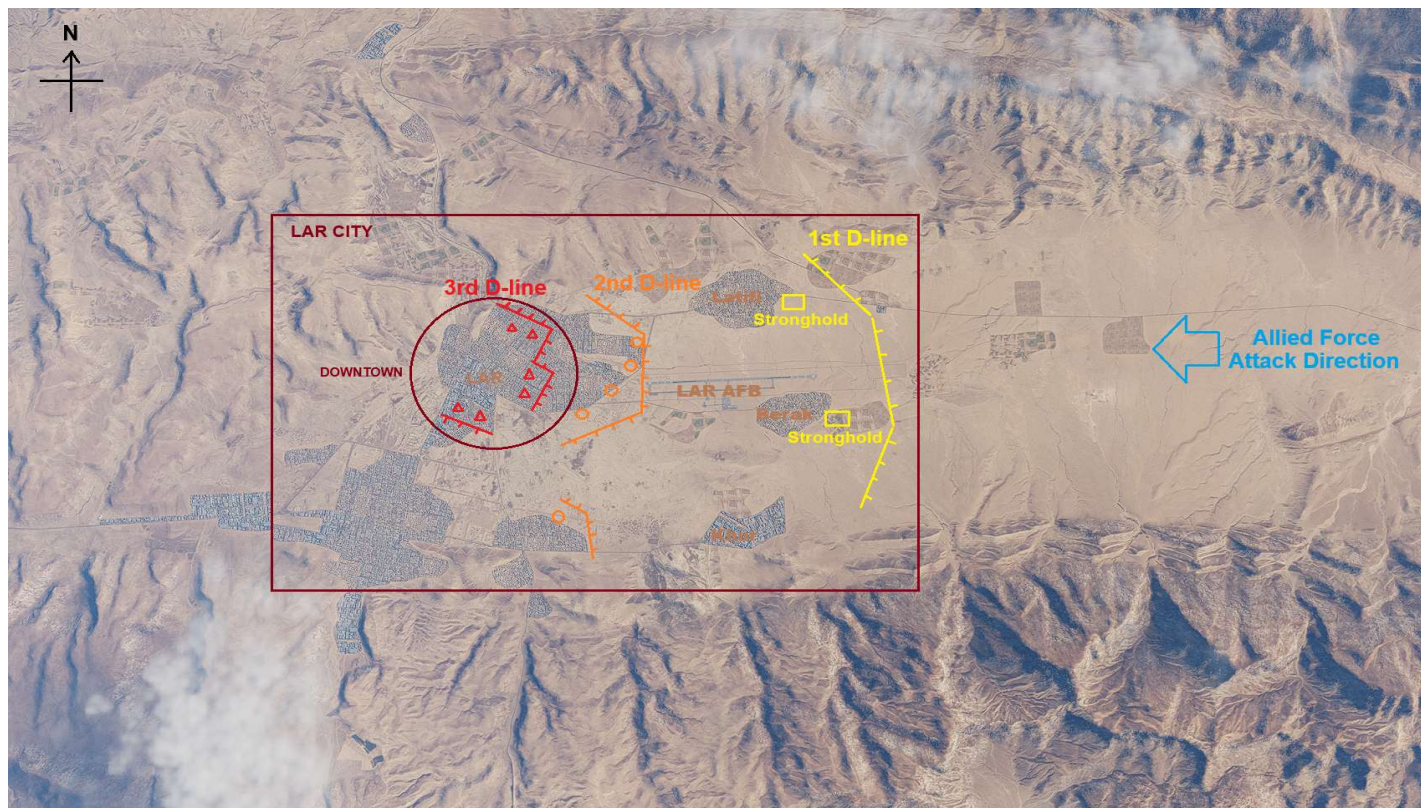
## INGRESS SCHEDULE



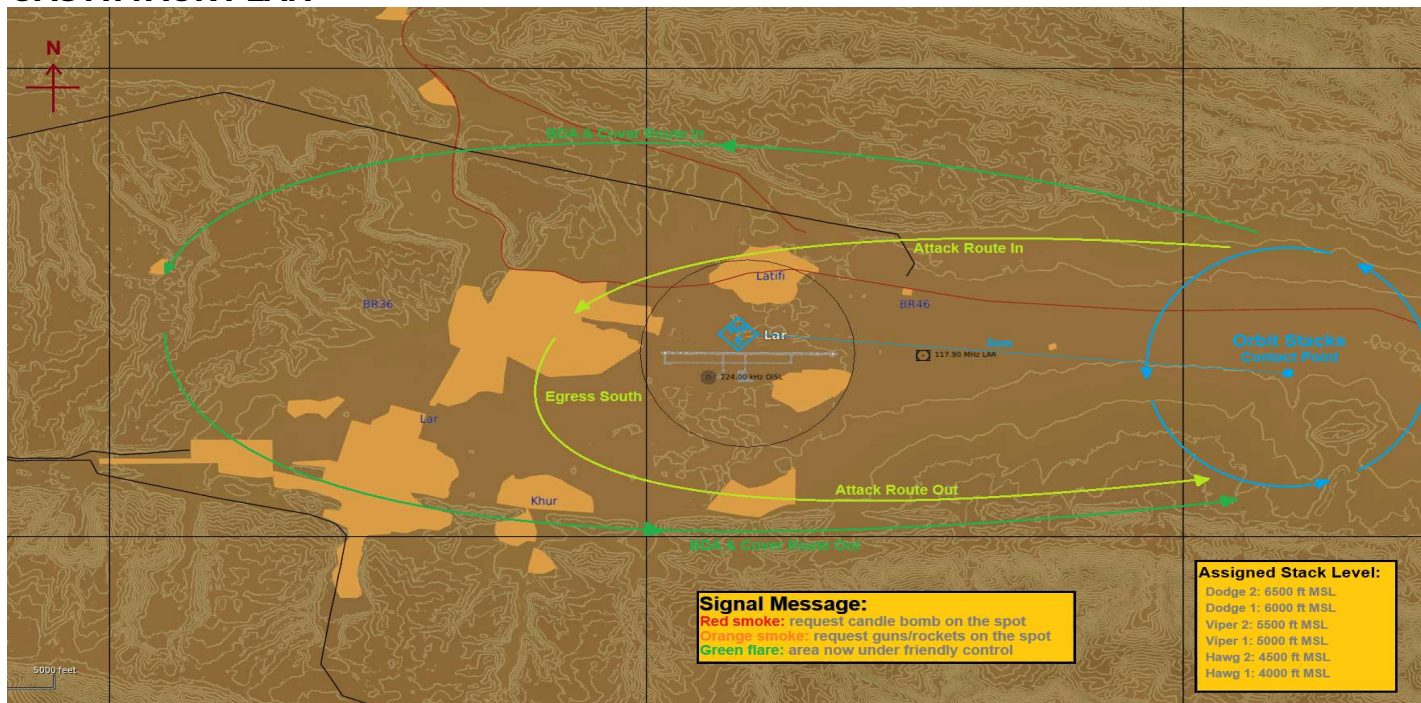




## LAR CITY & IRANIAN DEFENSIVE CHART



## CAS ATTACK PLAN



**RED SMOKE - REQUEST CANDLE BOMBS; ORANGE SMOKE - REQUEST GUNS/ROCKETS ATTACK  
GREEN FLARE - AREA/DISTRICT SECURED**